

A close-up photograph of a cannabis plant with green serrated leaves and budding flowers. The scene is backlit by bright sunlight, creating a warm, golden glow and a bokeh effect of light spots. A semi-transparent dark green horizontal band is overlaid across the middle of the image, containing the company name and presentation title.

INVICTUS_{MD}

CORPORATE PRESENTATION

CANADA'S CANNABIS COMPANY

LEGAL DISCLAIMER

NOTICE TO RECIPIENT

This investment is suitable only for sophisticated investors for whom an investment does not constitute a complete investment program, who do not require immediate liquidity for their investment and who fully understand and are willing to assume the risks involved. An investment may be considered to involve a substantial degree of risk, and an investor could lose all or a substantial amount of his or her investment. This document is not an offer to sell (or solicitation of an offer to buy) any interest in the Company. These materials may not be used or relied upon for any purpose other than as specifically contemplated by a written agreement. The materials may not be circulated outside of the recipient's organization, publicly referred to, or disclosed, in whole or in part, without express written permission. This presentation does not purport to be all inclusive or contain all the information that a prospective investor may require to fully evaluate an investment in the contemplated transaction. Prospective investors should conduct their own thorough investigation and due diligence before making an investment.

DISCLAIMER

This Presentation contains forward-looking statements and forward-looking information. Often, but not always, forward-looking statements can be identified by the use of words or phrases or state that certain actions, events or results "may", "could", "would", "might" or "will" be taken, occur or be achieved. Forward-looking statements involve known and unknown words such as "plans", "expects" or "does not expect", "is expected", "estimates", "intends", "anticipates" or "does not anticipate", or "believes", or variations of such words and risks, uncertainties and other factors which may cause the actual results, performance or achievements of the Company to be materially different from any future results, performance or achievements expressed or implied by the forward-looking statements and information. Examples of such statements include: (A) the financial forecast of the Company; (B) the intention to grow the business and operations of the Company; (C) anticipated timing for the availability of the Company's products to market and expected sale prices; (D) expected growth in the number of users of medical and recreational marijuana anticipated in North America, United Kingdom and Europe; and (E) the expansion of the Company's business into other revenue streams. Actual results and developments are likely to differ, and may differ materially, from those expressed or implied by the forward-looking statements contained in this Presentation. Such forward-looking statements are based on a number of assumptions which may prove to be incorrect, including, but not limited to: the ability of the Company to obtain necessary financing; the ability to complete a going public transaction; the ability to satisfy the requirements of a stock exchange; the economy generally; consumer interest in the products of the Company; competition; and anticipated and unanticipated costs. These forward-looking statements should not be relied upon as representing the Company's views as of any date subsequent to the date of this Presentation. Although the Company has attempted to identify important factors that could cause actual actions, events or results to differ materially from those described in forward-looking statements, there may be other factors that cause actions, events or results not to be as anticipated, estimated or intended. There can be no assurance that forward-looking statements will prove to be accurate, as actual results and future events could differ materially from those anticipated in such statements. Accordingly, readers should not place undue reliance on forward-looking statements. The forward-looking statements and information contained in this Presentation are expressly qualified in their entirety by this cautionary statement. The forward-looking statements and information included in this Presentation are made as of the date of this Presentation and the Company assumes no obligation to update such forward-looking statements to reflect new information, subsequent events or otherwise unless required by applicable securities legislation.



Executive Summary

Invictus MD is focused on two verticals:

1. Cannabis cultivation in Canada under the: Access to Cannabis for Medical Purposes Regulations (ACMPR)
2. Cannabis fertilizer and nutrients



REALIZED RETURN ON INVESTMENT

Invictus MD went public December 2014.

To date the company acquired and sold the following assets:

INVESTEES	% OWNERSHIP	COST TO ACQUIRE	PROCEEDS ON DISPOSAL	GAIN (LOSS) ON DISPOSAL	RETURN ON INVESTMENT	HOLDING PERIOD
Future Harvest - Sunblaster	75%	\$900,000	\$3,750,000	\$2,850,000	316%	11 months
Smokazon	35%	\$155,000	\$123,000	(\$32,000)	(21%)	10 months
Cannabis Health	100%	\$45,000	\$275,000	\$230,000	511%	10 months
		\$1,100,000	\$4,148,000	\$3,048,000	277%	

Invictus MD paid out a \$1,000,000 dividend to shareholders on December 5, 2016 representing \$0.07 per share.



BOARD OF DIRECTORS/ MANAGEMENT

DAN KRIZNIC

CPA/CA, CHAIRMAN, CEO,
FOUNDER & DIRECTOR

TREVOR DIXON

DIRECTOR

GEORGE KVETON

DIRECTOR

AARON BOWDEN

CPA/CA, DIRECTOR

JOSEF HOCHER

DIRECTOR

PAUL SPARKES

DIRECTOR

HERRICK LAU

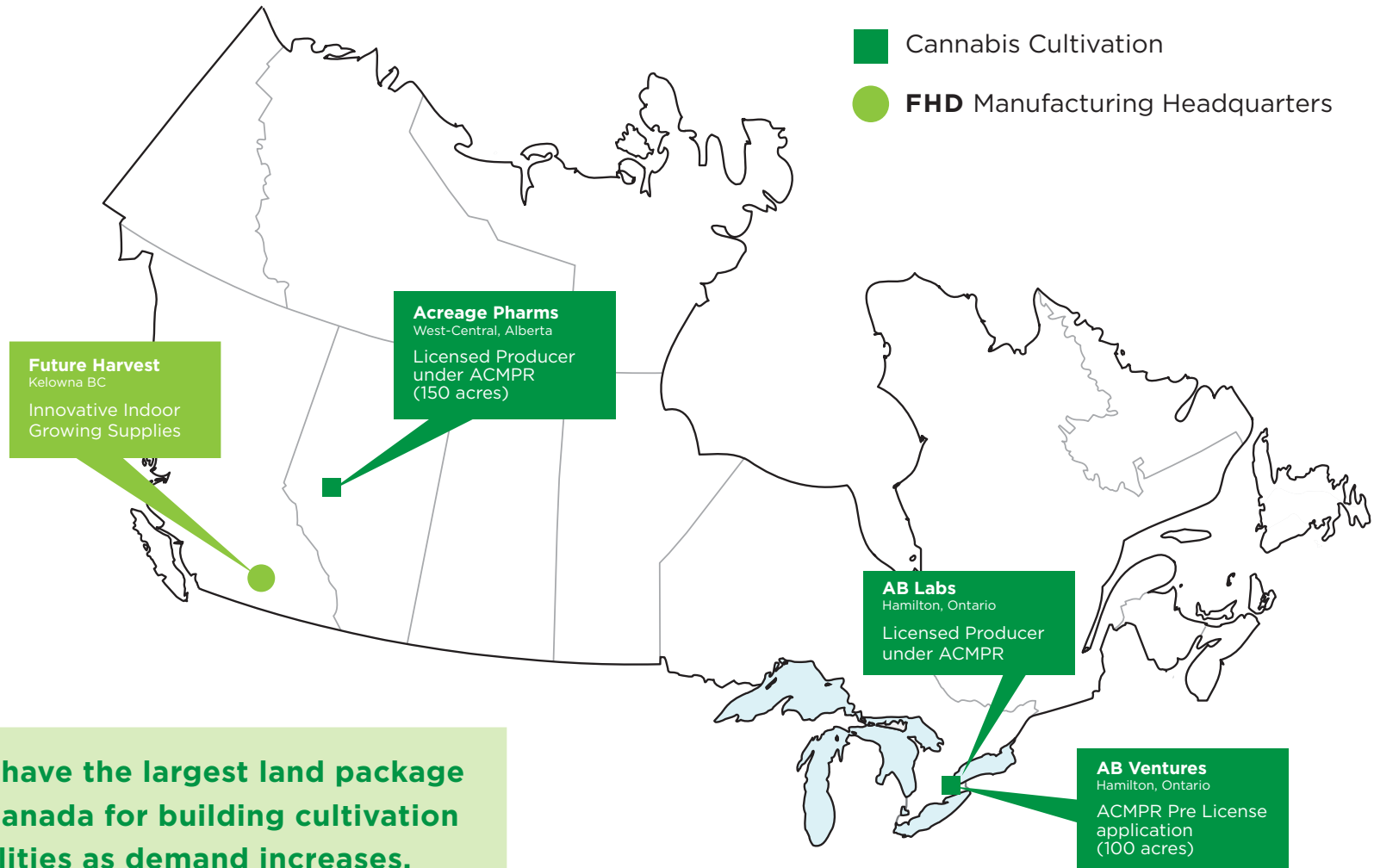
CFA, CHIEF FINANCIAL OFFICER

LARRY HEINZLMEIR

MBA VICE PRESIDENT, MARKETING &
COMMUNICATIONS



INVICTUS MD's CANADIAN CANNABIS PLATFORM



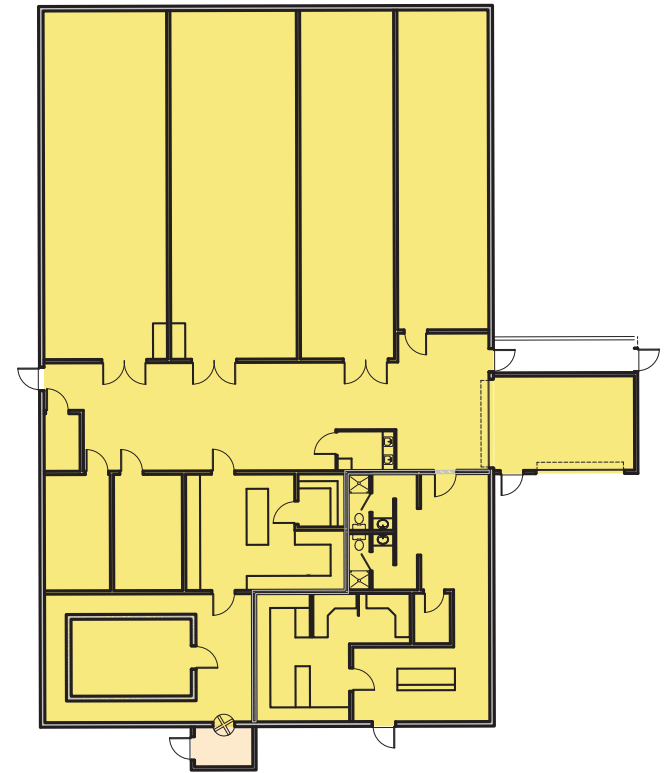
Production

Acreage Pharms Ltd.

West-Central, Alberta

Phase 1 - Existing

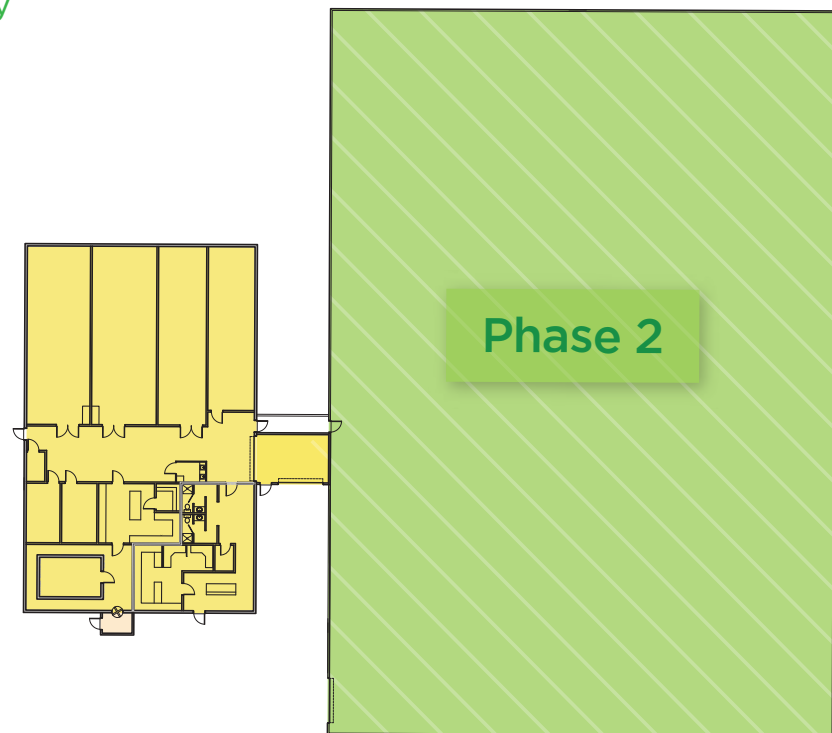
- 6,800 sq ft purpose built concrete and steel facility
- 609 kg cannabis cultivation capacity per annum
- Level 8 vault allows for storage onsite of \$31.25MM of dried cannabis
- The current 150-acre property can accommodate future expansion plans
- Invictus MD owns 100% of Acreage Pharms



Phase 2 - Funded Expansion

- 32,000 sq ft purpose built concrete and steel facility
- 4,391 kg cannabis capacity per annum
- Purpose built concrete and steel facility
- Level 8 vault will allow for storage onsite of \$31.25MM of product
- \$6.0MM Project
- Permitted, construction in progress - expected completion by January 2018

FULLY FUNDED



Production

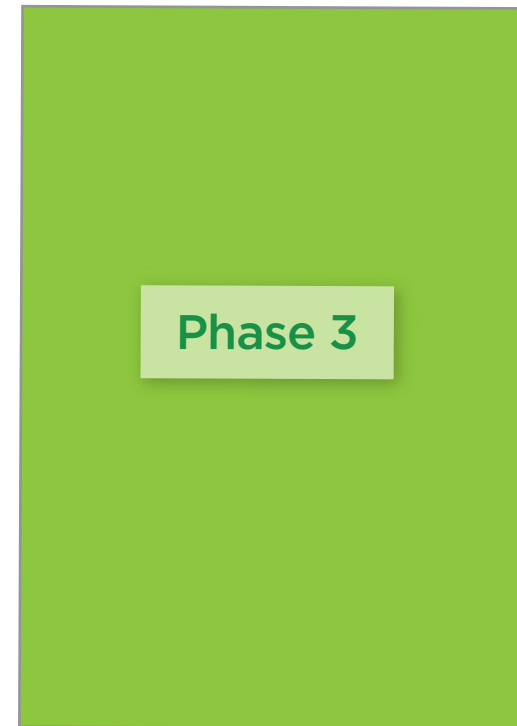
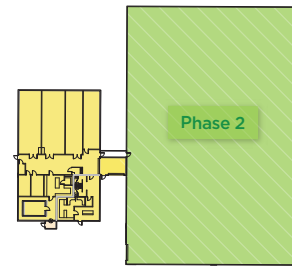
Acreage Pharms Ltd.

West-Central, Alberta

Phase 3 - Expansion

- 76,750 sq ft purpose built concrete and steel facility
- 9,000 kg cannabis cultivation capacity per annum
- \$16.5MM Project expected to be completed by June 2018 - subject to permitting

FULLY FUNDED

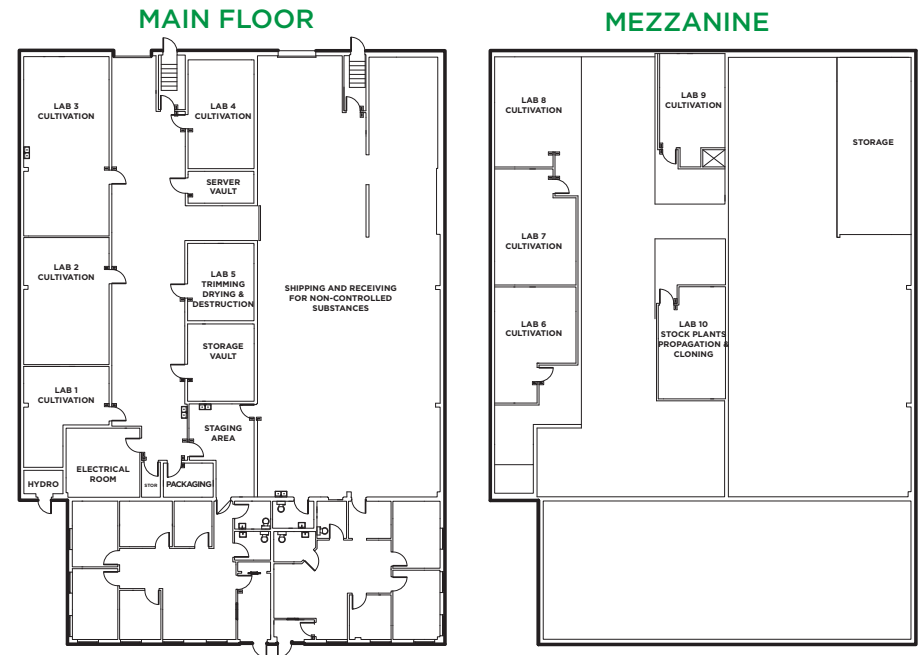


Production

AB Laboratories Inc.

Hamilton, Ontario

- 16,000 sq ft purpose built concrete and steel facility
- 1,000 kg cannabis cultivation capacity per annum
- Actively seeking adjoining properties for direct expansion to the existing facility
- Invictus MD owns 33 1/3 of AB Laboratories Inc.



Phase 1 - Funded Expansion

- 21,000 sq ft expansion plan is expected to be completed by the end of 2017 with an additional 21,000 sq ft building envelope
- 3,000 kg cannabis cultivation capacity per annum
- Purpose built concrete and steel facility
- \$5.5MM projected cost for Phase 1 expansion
- Fully funded subject to permitting

■ Phase 1 - 42,000 sq ft.
- - Future Potential



Funded Capacity | Invictus MD Combined

	Cash	Construction Price per Sq. Ft.	Sq. Ft.	Estimated kg	Ownership	Net kg to Invictus MD
Approximate Cash	\$28.0MM					
Acreage Pharms						
Existing			6,800	609	100%	609
Phase 2	(\$6MM)	\$188	32,000	4,391	100%	4,391
Phase 3	(\$16.5MM)	\$215	76,750	9,000	100%	9,000
AB Labs						
Existing			16,000	1,000	33.3%	333
AB Ventures						
Phase 1	(\$5.5MM)	\$215	21,000	3,000	33.3%	1,000
Total	\$0.0MM		152,550	18,000		15,333

Production Profile Forecast

Year	Acreage Pharms (kg)	AB Labs (kg)	AB Ventures (kg)	Total (kg)
2017	50	250	0	300
2018	3,850	1,000	3,000	7,850
2019	8,000	1,000	8,000	17,000
2020	15,000	1,000	15,000	31,000
2021	25,000	1,000	24,000	50,000

Funded capacity at 15,333 kg.

Estimated additional capital to achieve full 50,000 kg production profile by 2021 = \$47.5MM

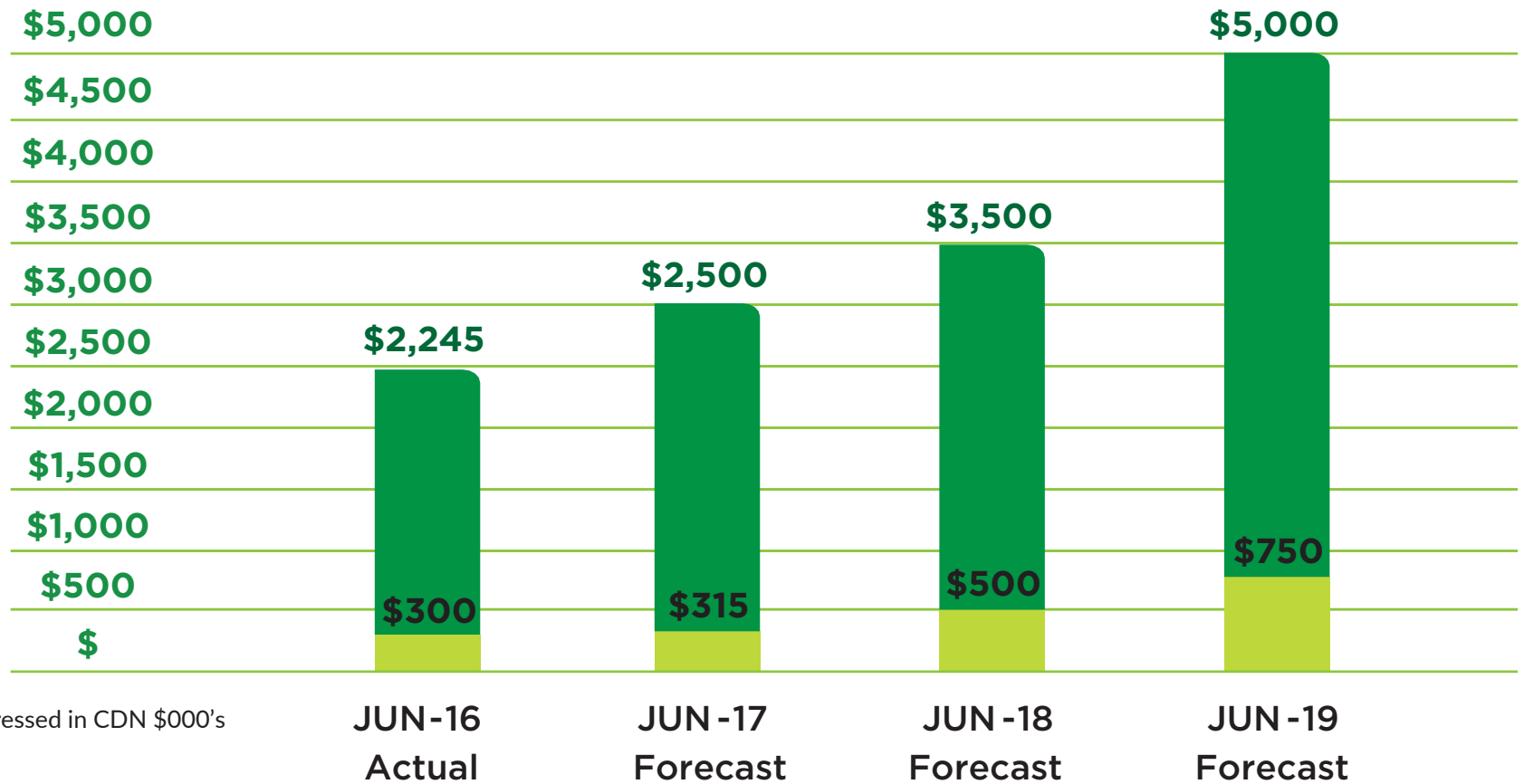
Capital injection from warrants estimated at \$44MM



FUTURE HARVEST (82.5% owned)

A premier manufacturer and distributor in the hydroponic and indoor growing industry for over 20 years.

Our innovative design has led to 40+ proprietary products which make up 95% of sales.



Expressed in CDN \$000's

*all figures exclude Sunblaster

EBITDA Revenue

Historical Road Map

December	2014	Invictus MD goes public on CSE
March	2015	Invictus MD acquired 20% minority stake in Future Harvest Development (FHD) (fertilizer and lighting)
July	2015	Invictus MD acquired majority stake in FHD
February	2016	Invictus MD sold off Sunblaster Lighting for \$5 million (Division of FHD)
December	2016	Invictus MD pays \$1 million dividend to shareholders representing \$0.07 per share
December	2016	Invictus MD raises \$12 million and closes 33 1/3% of AB Laboratories (Licensed Producer under ACMPR)
March	2017	Invictus MD Closed \$16.21 million bought deal
March	2017	Listed on TSX-V
March	2017	Acreage Pharms receives license under ACMPR
April	2017	Invictus MD completes acquisition of Acreage Pharms Ltd.
May	2017	Invictus MD Closed \$25 million bought deal
May	2017	AB Ventures closed 100 acre land acquisition. Once licensed under ACMPR will be used for future cannabis cultivation
June	2017	AB Labs achieves first harvest
July	2017	Acreage Pharms receives development permit for Phase 2 and begins construction
August	2017	Acreage Pharms achieves first harvest
August	2017	Acreage Pharms (Phase 1) and AB Labs at full production

Capitalization Structure

Total Outstanding: 77,587,881

Outstanding options: 5,415,000

Outstanding Warrants: 27,246,347

Total shares fully diluted: 110,249,228



TSXV:IMH
OTC:IVITF
FRANKFURT:8IS1

77.6MM
Basic shares
outstanding

\$28.0MM
Cash

Invictus MD

Contact

Larry A Heinzlmeir

Vice President, Marketing & Communications

larry.heinzlmeir@invictus-md.com

604.537.8676

